



# **Business** **Information** **Bulletin**



## **Burglary Prevention Tips**

*To help protect our businesses in the 23rd District from being burglarized please take a moment to review these security tips.*

**Consider installing video surveillance equipment along with proper interior and exterior lighting, and a monitored alarm system.**

**If you already have video surveillance equipment installed, make sure that you are getting good quality images. Cameras should be of high enough resolution that a subject's face can be clearly identified from the recorded images. Proper lighting is also needed in the surveillance areas to ensure good quality video images.**

**If you already have a burglar alarm system installed, make sure it is in proper working condition and that you have adequate coverage of all the vulnerable areas of your building (i.e. doors, windows, skylights, etc).**

**Ask your alarm company what will happen if the alarm is disabled by a burglar - does it trigger the alarm or will it just stop working?**

**Businesses should also evaluate the physical security of their buildings.**

**Make sure adequate locks are installed on all doors and that the door frames are secure and in good condition. The more secure your doors and locks are, the less likely you will become a burglary victim.**

**During some recent burglaries to businesses, subjects have attacked the door lock cylinder directly to gain access to the building.**

**Consider adding additional hardware that will improve the level of security of your current doors/locks. There are several simple devices available that may help improve the security of your current door/lock assembly. Contact a locksmith or your security system representative for help. (Some examples have been provided on next page)**

# Security devices to help protect lock cylinders

## HARDENED CYLINDER COLLARS

These hardened collars come in various designs and material.

They are tapered to prevent being gripped by tools such as vise grips, pipe wrenches or pliers.

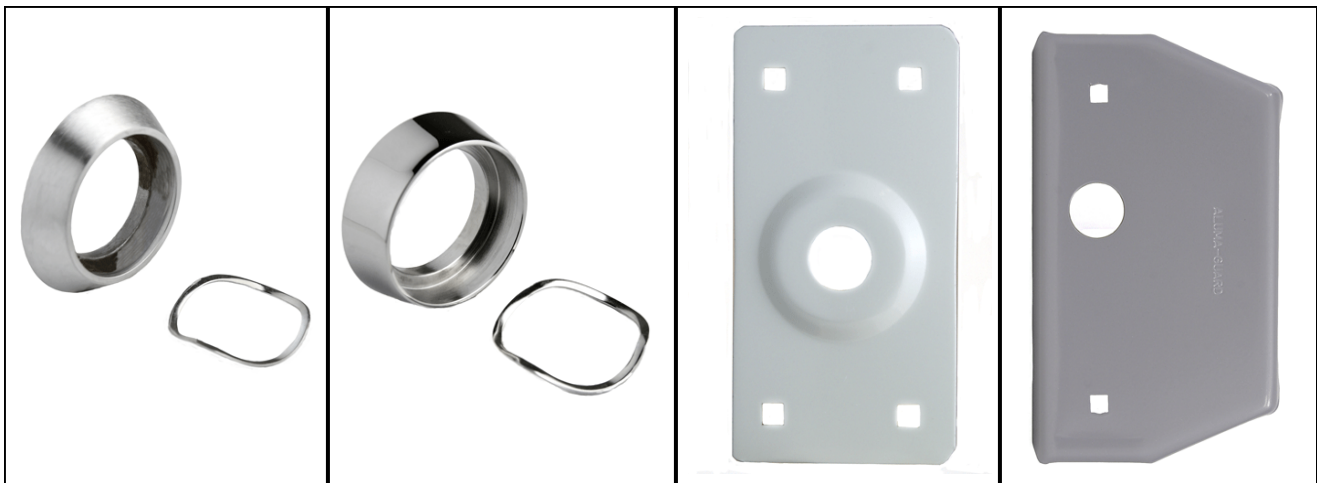
The collar is also designed to spin if gripped by a tool so the lock can not be spun and unlocked.

## CYLINDER GUARD PLATES

These plates come in various designs, some incorporating a latch protector.

The plate covers the lock cylinder to prevent being gripped by tools and has an opening to allow a key to be inserted.

The plate will also help protect the lock cylinder from being pried.



**If you would like to request a free physical security survey for your business you may contact the Preventative Programs North section of the Chicago Police Department at 312-745-5838. An officer will perform a comprehensive inspection and then provide a confidential written report with recommendations for improving your security. There is no charge for this service.**

**Always report any suspicious activity or individuals in your neighborhood immediately by calling 911. Try to provide a detailed description of the individuals and activity, including descriptions of vehicles that are being used.**

**In the event that your business is burglarized call 911 immediately and if possible do not disturb any physical evidence on the scene. This could include damage to locks or doors, fingerprints on smooth surfaces, possible DNA traces such as blood from burglar or any personal items left behind by burglar.**

***If you have any questions or need more information contact the 23rd District Community Policing Office at 312-744-0064 or at [23ehotline@chicagopolice.org](mailto:23ehotline@chicagopolice.org) . If you any information regarding a burglary you may also contact the Burglary Mission Team supervisor directly at [peter.sodini@chicagopolice.org](mailto:peter.sodini@chicagopolice.org) .***